



Powered by  Fuji Electric

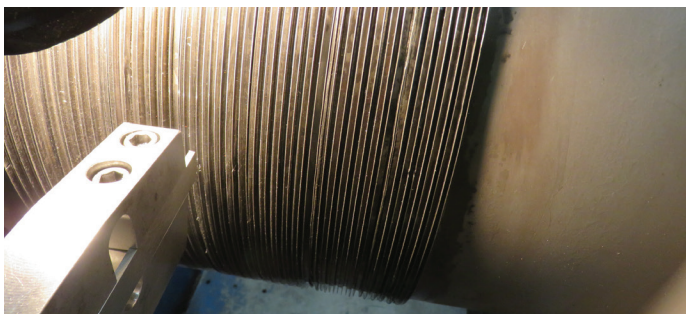
## Ingenio Trinidad Sugar

### Reliable Turbine Services Puts Shin Nippon Geothermal Rotor Back into Service

Geothermal is a clean, sustainable, and reliable power source for many operations. But, like any type of system, maintenance, and even, occasional repairs are required. So, when Ingenio Trinidad Sugar in Guatemala needed to service its Shin Nippon rotor and quickly get it back into service, they turned to the experts at Reliable Turbine Services (RTS).

#### Selecting an Authorized Provider is Essential

Geothermal rotors are large, extremely precise components. Trusting service or repair to just any provider can lead to unexpected results. That's why Ingenio Trinidad Sugar selected RTS. As a Shin Nippon authorized service provider, RTS has access to designs, measurements, specifications, and other intellectual property that enables a better service experience.



- Removes risk – no need to reverse engineer the design.
- Reduces incoming inspection duration.

## A Service Process Built on Flexibility, Experience, and Expertise

It's extremely important to leverage industry best practices and internal know-how to service turbines. With over 38 years of experience, RTS was able to put this rotor through the paces.



## A Safety-First Approach

While Geothermal steam turbines offer a clean energy source, the steam itself isn't actually clean. There are a variety of unhealthy contaminants from geothermal steam. RTS is well versed on these contaminants and has procedures in place to protect everyone that comes in contact with the turbine.

## Rotor Shipped From RTS on Schedule

With all work performed and final inspections completed, the rotor was shipped back to Trinidad Sugar in Guatemala within scheduled duration. And, best of all, operations are back in full operations!



RTS received the rotor and an Engineered rotor modification package to follow for the stage 12 wheel and blade root modification. Stage 12 wheel faces and blade root were machined to new designed profile.

